

OUR COMMERCIAL-OFF-THE-SHELF (COTS) CAPABILITIES

Wide-area ISR Discovery

CyOne has developed its proprietary, modular, web-based COTS product line called Wide-area ISR Discovery (WISRD). This product line leverages integrated state-of-the-art open source technology and DISA-approved Iron Bank hardened containers to enable end-to-end support of WISRD's four modules for Collection Management, Support to Targeting, All-Source Analysis, and Weather Effects.

Four modules make up the WISRD product line:

- **Collection Management** (WISRD-CM)
- **Support to Targeting** (WISRD-ST)
- **All Source** (WISRD-AS)
- **Weather Effects** (WISRD-WX)

The WISRD product line of capabilities is sponsored by the Army's Intelligence Battle Lab (IBL) and provides support to RAVEN-X, Arcane Lightning, and INDOPACOM. As part of the support to these organizations CyOne has demonstrated experience integrating WISRD capabilities and maintaining interoperability with multiple Joint and Army systems. Additionally, CyOne was recently awarded PM IS&A's Intel Apps Support to Targeting capability needs.

WISRD's federated services demonstrates the effective integration of the latest technologies which enable efficiencies toward intelligence warfighter tasks while retaining the flexibility to utilize both local and cloud-hosted computing resources.



WISRD

Wide-area ISR Discovery

WISRD-CM enables prioritized, time relevant ISR and other asset collection planning tools in order to support operational Electronic Warfare, Intelligence, and Information Dominance requirements and mission needs. These capabilities support multi-echelon and Joint collaboration to ensure proper alignment and prioritization of (EW, Intel, and Cyber) assets and dynamic sensor re-tasking, thus eliminating duplication of effort, and expedites synthesis of post-mission collection data to the Warfighter to support operational timelines.

WISRD-ST enables critical support to targeting tasks within the operational environment throughout the entire Decide, Detect, Deliver, and Assess (D3A) workflow to support the Military Decision-Making Process (MDMP). These tools service end to end target development life cycle management through its mission planning, target intelligence packaging, alert notifications, and Battle Damage Assessment (BDA) capabilities.

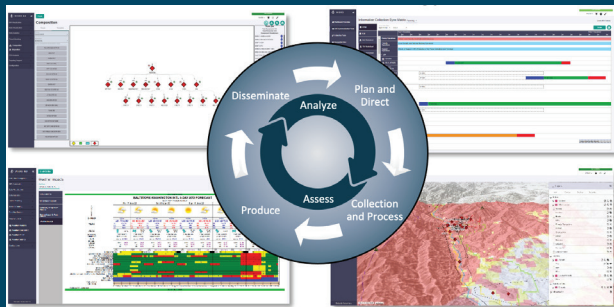
WISRD-AS enables situational awareness and understanding of the operational environment through data visualization & analytics, threat modeling, mission planning, and support to the targeting process. These tools provide All-Source practitioners with an in-depth and rich toolset to fully build threat knowledge and understanding to enable the MDMP.

WISRD-WX enables the analysis of weather impacts and effects during the collection, processing, evaluation, and interpretation of relevant military operations. These capabilities enable intelligence professionals with the ability to evaluate the effects of each military aspect of weather and identify which aspects have the most bearing on operations and decision making.



CyOne

LEADERS IN INNOVATION, SUPPORT, & DESIGN EXCELLENCE



cyone.com

admin@cyone.com

WHO WE ARE

CyOne is a leader in customer data integration, software engineering, cyber security, and intelligence analytical expertise. Our team is driven to capture challenging opportunities in order to develop lasting solutions for our customers. We recognize that a well-informed, highly skilled team is paramount for the company to achieve its corporate goals. At CyOne, our motto is “the team comes first.” Key amongst CyOne corporate goals is continually fostering a healthy work environment that promotes employee well-being, happiness, and loyalty.

CyOne’s team is comprised of highly experienced and motivated:

- **Cyber Security Specialists**
- **Customer Data Integration Experts**
- **Software Engineers**
- **Battle Tested Intelligence Analysts**

Our team’s expertise spans multiple intelligence domains across the DoD. Our team’s level of user engagement enables CyOne to successfully forecast, design and prototype future capability to support global DoD operations and decisive action engagements. Our expert systems engineers and software developers combine to transform customer requirements into software prototypes that evolve into mature capability sets. Consistently our solutions are well received and adopted by our customers.

WHAT WE DO Cyber Security

At CyOne our team of Cyber Security specialists have been securing government and private sector networks and systems for decades. The Information Assurance field has evolved to become the broader discipline of Cyber Security. In turn Cyber Security has grown rapidly to become a linchpin of the application and network security paradigm. Cyber-attacks have grown to be a significant threat for both the government and commercial industry. As the threat environment grows, as systems are updated or enhanced, as vulnerabilities are exposed, our team utilizes an agile approach to continually evolve with the threat environment. All of our cyber security specialists are Risk Management

Framework (RMF) trained and certified. Our innovative approach keeps CyOne and our customers ahead of any potential cyber related challenges.

Software Engineering & Development

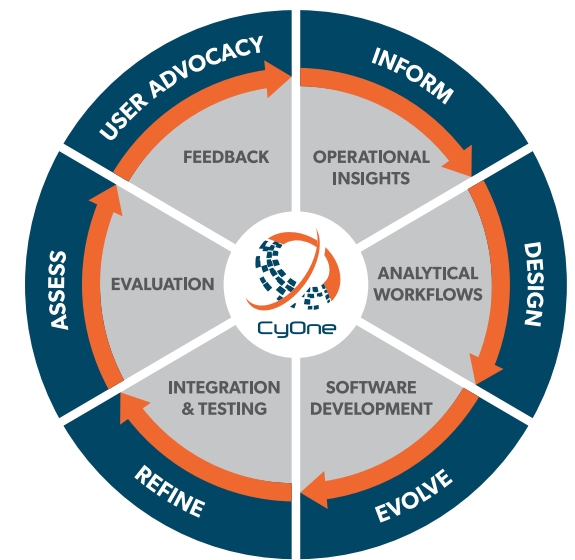
CyOne has a team of skilled engineers that are capable of solving the difficult problems faced by the DoD and is known for delivering complex systems on time, with high quality, and within budget. CyOne engineers are given wide latitude in the performance of their tasks and are led by seasoned software veterans. Areas of expertise include Data Engineering, server-side application and analytics, and thin-client UI development. Our team of highly skilled software architects, developers, systems engineers, and testers have a track record of delivering high quality software applications to both desktop and cloud systems. The team is skilled in the use of:

- **Multiple Software Languages** (C#, Java, JavaScript, TypeScript, Python)
- **Map Tools** (Cesium, OpenLayers, GeoServer)
- **Web Architectures/Frameworks** (REST, AngularJS)
- **DevSecOps**

In addition, the team has deployed solutions to both Linux and Windows environments using modern container platforms including Docker, containerd, Kubernetes, and Helm.

Intelligence Analytics & User Experience Consultants

CyOne maintains a team of intelligence practitioners that provides a high level of analytical experience and knowledge as a resident team of users across multiple disciplines of the Intelligence Community. Working as consultants to government program offices, this team of experts provides decades of high level analytical and operational experience as intelligence practitioners in support of our government clients. We refine, transform, and enhance our customers’ intelligence processing capabilities in support of organizational success. This team of experts follow a cyclical process flow, encapsulating sound HSI and UX design principles,



to ensure maximized input and acceptance of future capabilities to the customer base by providing:

- **Operational Insights:** Provide inputs from analytical experiences to government program offices
- **Analytical Workflows:** Act as a liaison between the Intelligence Community, various TCM organizations, and the government program office to ensure all requirements are received and properly vetted against the current doctrines and practices of warfighting functions
- **Software Development:** Work with systems engineers in providing inputs into software requirements capture, software implementation, and capability delivery; enhancing delivery value of effort to government program offices
 - Provide ongoing workflow concepts in support of new and enhanced capabilities
 - Collaborate with vendors on their respective projects to ensure user requirements are fully understood and met
- **Integration & Testing:** Conduct user driven acceptance testing to assess and verify functional, performance, reliability, and quality assurance against the major design requirements
- **Feedback:** Gather feedback as User Representatives within government offices during engagements with the operational force and during evaluation events