



# WISRD

Wide-area ISR Discovery

powered by



CyOne

Leaders in Innovation, Support,  
& Design Excellence



# WISRD

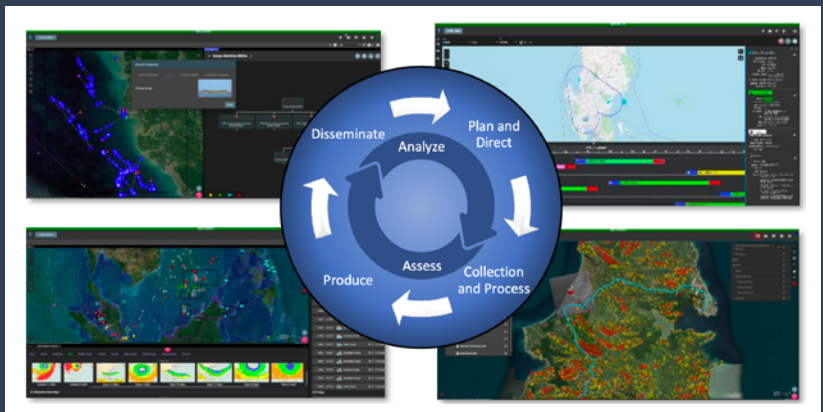
Wide-area ISR Discovery

CyOne has developed its proprietary modular web-based COTS product line called Wide-area ISR Discovery (WISRD). This product line leverages integrated state-of-the-art open source technology and DISA-approved Iron Bank hardened containers to enable end-to-end support of WISRD's five modules:

- **Support to Targeting** (WISRD-ST)
- **Collection Management** (WISRD-CM)
- **All Domain Sensing** (WISRD-ADS)
- **Weather Effects** (WISRD-WX)
- **All Source** (WISRD-AS)

The WISRD product line of capabilities is sponsored by the Army's Intelligence Battle Lab (IBL) and provides support to RAVEN-X, Arcane Lightning, and INDOPACOM. As part of the support to these organizations CyOne has demonstrated experience integrating WISRD capabilities and maintaining interoperability with multiple Joint and Army systems. Additionally, CyOne was recently awarded PM IS&A's Intel Apps Support to Targeting capability needs.

WISRD's federated services demonstrate the effective integration of the latest technologies which enable efficiencies toward intelligence warfighter tasks while retaining the flexibility to utilize both local and cloud-hosted computing resources.



## **WISRD-ST**

Enables critical support to targeting tasks within the operational environment throughout the entire Find, Fix, Track, Target, Engage, Assess (F2T2EA) workflow to support the Military Decision-Making Process (MDMP). These tools service end to end target development life cycle management through its mission planning, target visualization, alert notifications, and Battle Damage Assessment (BDA) capabilities.

---

## **WISRD-CM**

Provides prioritized, time-sensitive ISR and other asset planning tools to support operational Electronic Warfare, Intelligence, and Information Dominance requirements and mission objectives. These capabilities facilitate multi-echelon and joint collaboration, ensuring the effective alignment and prioritization of (EW, Intel, and Cyber) assets and dynamic sensor re-tasking. By reducing duplication of effort and accelerating the synthesis of post-mission data, WISRD-CM enables timely and actionable intelligence, enhancing operational effectiveness and supporting mission success.

---

## **WISRD-ADS**

Provides advanced object detection, correlation, and analysis of publicly and commercially available information (PAI/CAI) across the Maritime, Aerial, Land, Cyber, and Space domains. These capabilities facilitate seamless partner-nation sharing and activity detection within unclassified or sensitive but unclassified (SBU) environments.

---

## **WISRD-WX**

Provides comprehensive analysis of weather impacts and effects throughout the collection, processing, evaluation, and interpretation of military operations. These capabilities equip planning professionals and decision-makers with insights to assess the impact of various weather conditions on military operations, equipment and identify factors that most influence strategic and tactical decisions.

---

## **WISRD-AS**

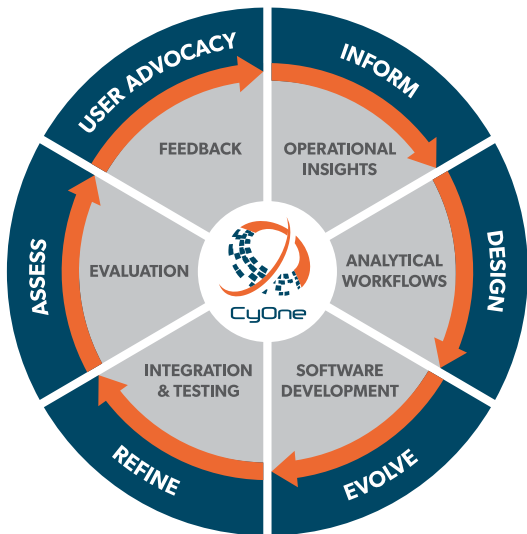
Enhances situational awareness and operational understanding through advanced data visualization, analytics, threat modeling, and mission planning. By providing comprehensive support to the targeting process, WISRD-AS equips operations leads and planning teams with the tools needed to build a detailed threat picture and streamline decision-making, enabling effective execution of the Military Decision-Making Process (MDMP).

## WHO WE ARE

CyOne is a leader in customer data integration, software engineering, cyber security, and intelligence analytical expertise. Our team is driven to capture challenging opportunities in order to develop lasting solutions for our customers. We recognize that a well-informed, highly skilled team is paramount for the company to achieve its corporate goals. CyOne's team is comprised of highly experienced and motivated:

- **Cyber Security Specialists**
- **Customer Data Integration Experts**
- **Software Engineers**
- **Battle Tested Intelligence Analysts**

Our team's expertise spans multiple intelligence domains across the DoD. Our team's level of user engagement enables CyOne to successfully forecast, design and prototype future capability to support global DoD operations and decisive action engagements. Our expert systems engineers and software developers combine to transform customer requirements into software prototypes that evolve into mature capability sets. Consistently our solutions are well received and adopted by our customers.



Chief Executive Officer

**Kevin Mullis**

**admin@cyone.com**

**667.268.1493**

1202 Technology Drive, Suite B  
Aberdeen, MD 21001

Cage Code: 78D67  
DUNS: 079562461